

PRELIMINARY LANDSCAPE KEYNOTES

**SHADE STUDY CALCULATIONS**

PROJECT:	BAYSIDE HR PARCEL 49	10/21/2022
<b>HR PARCEL 49 ENTIRE SITE</b>		
STANDARD STALLS	1,527	412,290
COMPACT STALLS	281	70,812
HANDICAP STALLS	66	23,760
TOTAL PAVED PARKING AREA:		506,862
TOTAL SHADE REQUIRED:	50%	253,431
TOTAL SHADE PROVIDED:		266,146
TOTAL SHADE PERCENTAGE		53%

SYMBOL	PATTERN	QTY.	UNIT	IN S.F.	TOTAL S.F.
<b>30 TO 35' TREES</b>					
Pistacia c., Zelkova s., Quercus v.,	35-I	114	X	961	109,554
Quercus w.,	35-P	189	X	481	90,909
	35-N	48	X	240	11,520
<b>25' TO 30' TREES</b>					
Quercus r., Pinus e.	30-I	0	X	707	0
	30-P	24	X	354	8,496
	30-N	0	X	177	0
<b>20' TO 25' TREES</b>					
Pyrus c.	25-I	1	X	491	491
	25-P	59	X	246	14,514
	25-N	0	X	123	0
<b>15' TO 20' TREES</b>					
Quercus r.,	20-I	0	X	314	0
	20-P	33	X	157	5,181
	20-N	0	X	79	0
<b>10' TO 15' TREES</b>					
Cotinus c., Laurus n., Chiloopsis l.,	15-I	49	X	177	8,673
Rhaphiolepis l., Cercis c.,	15-P	186	X	88	16,368
Lagerstroemia i	15-N	10	X	44	440
<b>TOTAL</b>					<b>266,146</b>

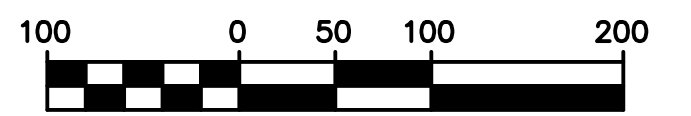
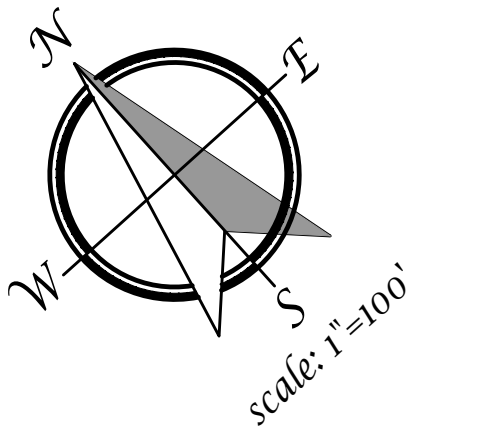
**SHADE STUDY CALCULATIONS**

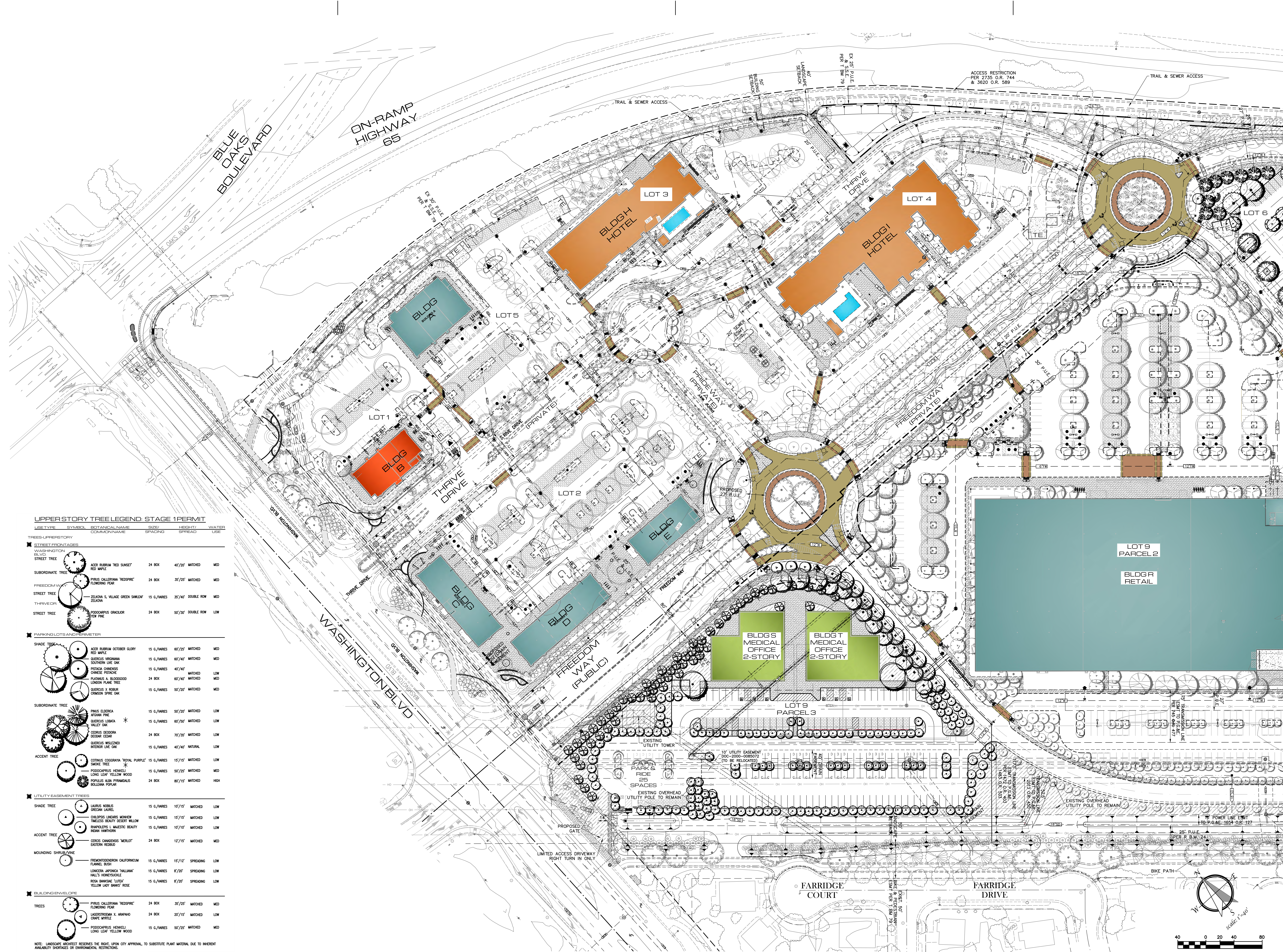
PROJECT:	BAYSIDE HR PARCEL 49	10/21/2022
<b>LOT 6 BLDG. M, LOT 9 BLDG. S &amp; T</b>		
STANDARD STALLS	171	46,170
COMPACT STALLS	34	8,568
HANDICAP STALLS	8	2,880
TOTAL PAVED PARKING AREA:		57,618
TOTAL SHADE REQUIRED:	50%	28,809
TOTAL SHADE PROVIDED:		17,236
TOTAL SHADE PERCENTAGE		30%

SYMBOL	PATTERN	QTY.	UNIT	IN S.F.	TOTAL S.F.
<b>30 TO 35' TREES</b>					
Pistacia c., Zelkova s., Quercus v.,	35-I	3	X	961	2,883
Quercus w.,	35-P	1	X	481	481
	35-N	6	X	240	1,440
<b>25' TO 30' TREES</b>					
Quercus r., Pinus e.	30-I	0	X	707	0
	30-P	0	X	354	0
	30-N	0	X	177	0
<b>20' TO 25' TREES</b>					
Pyrus c.	25-I	1	X	491	491
	25-P	3	X	246	738
	25-N	0	X	123	0
<b>15' TO 20' TREES</b>					
Quercus r.,	20-I	0	X	314	0
	20-P	0	X	157	0
	20-N	0	X	79	0
<b>10' TO 15' TREES</b>					
Cotinus c., Laurus n., Chiloopsis l.,	15-I	27	X	177	4,779
Rhaphiolepis l., Cercis c.,	15-P	70	X	88	6,160
Lagerstroemia i	15-N	6	X	44	264
<b>TOTAL</b>					<b>17,236</b>

- A. **STREETSCAPE DESIGN INTENT** – Streetscape will be consistent with other projects within the area. Washington Blvd. Incorporates double Row of trees per the Specific Plan requirements. The Acer rubrum was substituted for the Coast Live Oak as it is smaller and more compatible with the storm drain structures to the east. Freedom Way will incorporate the use of Double Row of Zelkova serrata Village Green trees along with massed planted under story of shrubs for interest, color, and accenting pedestrian paths. Freedom Way terminates in a roundabout with and vertical accent trees and color massed planting. Shrub masses will utilize drought tolerant species where appropriate.
- B. **ENTRY TREATMENT** – Entry will be highlighted by grove of Cercis canadensis 'Merlot' in a double row and a turf area with low background planting. Monument signage will flank entry and at Freedom Way and Thrive Dr. intersections. Under story will be low and conforming to an undulated ground contour, while maintaining sight lines. Use of colorful plant materials will further enhance and define the entries, along with drought tolerant species where appropriate.
- C. **BUILDING ZONE** – Focus is on connectivity for pedestrians. A variety of columnar and small scale trees with low contrasting shrub forms will be used to add interest, color, and texture. Several outdoor plaza spaces with tree wells will be incorporated between Buildings.
- D. **SCREENING INTENT** – Primary planting along the south property lines are restricted in height due to overhead power line easement. However, an existing berm has been used to further mitigate views into project. Primary planting consist of large evergreen tress located outside of overhead power easement and overhead utility compatible tees, Laurus nobilis and Rhaphiolepis Majestic Beauty for year round buffering of power lines and towers, and medium height shrubs to screen adjacent properties. Planting of the City owned 50' corridor has been provided where trail was reconstructed to incorporate drainage swales. Additionally, a barrier type ground planting has been used adjacent to Summerhill Park. All plant material shall be drought tolerant. A 42" open metal fence will be placed adjacent to parking lot where it abuts Summerhill Park.

- E. Protected preserve boundary area. Prior to construction of any phase of the project, high visibility temporary construction fencing shall be installed along the parcel adjacent to the preserve. All construction activity must be per city requirements.
- F. Proposed post and cable fencing
- G. Existing 36" high berm along south property line.
- H. Pedestrian access to project site from adjacent Summerhill Park.
- I. 42" high open metal fence adjacent to parking lot.
- J. **EXISTING TRAIL** – Existing trail has been modified to allow for proposed berming, overland drainage release, drainage pipe coverage, and for replacing trail back onto City property.
- K. **HIGHWAY 65 DESIGN INTENT** – The Highway 65 Corridor will be consistent with other projects in the area. Platanus acerfolia Bloodgood staggered approximately 30' O.C., intermixed with Cedrus deodara. A 5'0" wide D.G. trail is proposed within the 40' landscape setback along Hwy. 65. Trees shall not be planted min of 15' from ex. 24" sewer line. Mixed species and low forms of shrubs for interest, color, and buffering of the project from the highway. Shrub masses will utilize drought tolerant species where appropriate. Eastern boundary shall be limited to plant material as identified in the plant legend due to existing proximity of adjacent Parcel 84 Open Space. It is desired to integrate 5'0" d.g. trail within the 40' landscape setback.
- L. **PARKING LOT INTENT** – Designated trees will provide a canopy of shade. Under story plantings within the parking lot will consist of low shrubbery and/or ground covers. Pedestrian access is provided from Parking lot to adjacent existing bike trail along the south property line.
- M. Proposed Decomposed Granite walking path adjacent to north project boundary.
- N. Proposed evergreen screen trees adjacent to south side of living spaces facility.

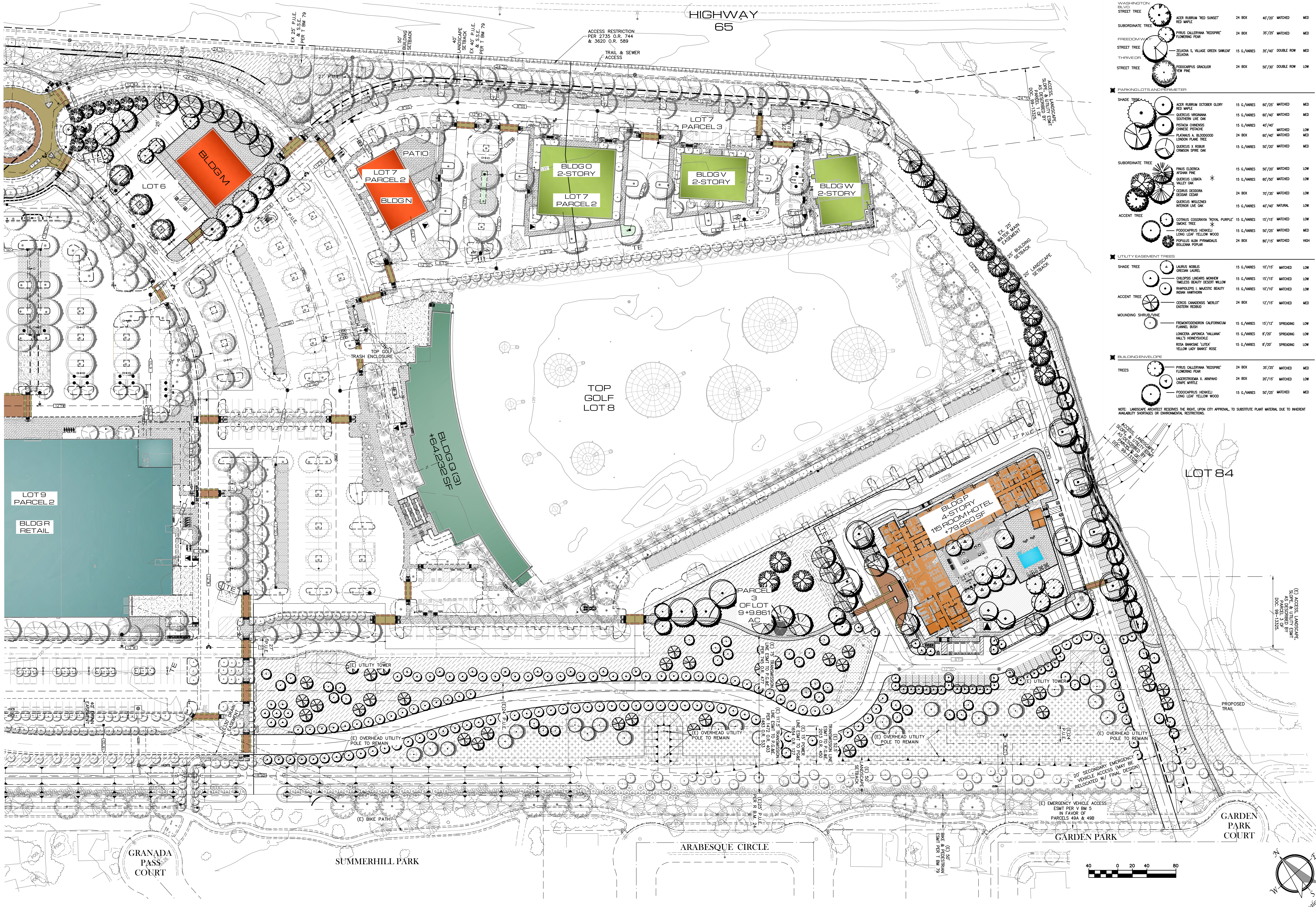




**UPPER STORY TREE LEGEND: STAGE 1 PERMIT**

USE TYPE	SYMBOL	BOTANICAL NAME	SIZE / SPACING	HEIGHT / SPREAD	WATER USE
<b>TREES - UPPER STORY</b>					
<b>STREET TREES</b>					
WASHINGTON BLVD STREET TREE	(Symbol)	ACER RUBRUM 'RED SUNSET' / RED MAPLE	24 BOX	40'/20'	MATCHED / MED
FREEDOMWAY STREET TREE	(Symbol)	PIRUS CALLERIANA 'RESPIRE' / FLOWERING PEAR	24 BOX	35'/25'	MATCHED / MED
THRIVE DRIVE STREET TREE	(Symbol)	ZELKOVA S. VILLAGE GREEN SMLD / ZELKOVA	15 G./ARES	35'/40'	DOUBLE ROW / MED
THRIVE DRIVE STREET TREE	(Symbol)	PODOCARPUS GRACILOR / YEW PINE	24 BOX	50'/30'	DOUBLE ROW / LOW
<b>PARKING LOTS AND DRIVEWAY</b>					
SHADE TREE	(Symbol)	ACER RUBRUM 'OCTOBER GLORY' / RED MAPLE	15 G./ARES	60'/20'	MATCHED / MED
SHADE TREE	(Symbol)	QUERCUS VIRGINIANA / SOUTHERN LIVE OAK	15 G./ARES	60'/40'	MATCHED / MED
SHADE TREE	(Symbol)	PISTACIA CHINENSIS / CHINESE PISTACHE	15 G./ARES	40'/40'	MATCHED / LOW
SHADE TREE	(Symbol)	PLATANUS A. BLOODGOOD / LONDON PLANE TREE	24 BOX	60'/40'	MATCHED / MED
SHADE TREE	(Symbol)	QUERCUS X ROBUR / CRIMSON SPICE OAK	15 G./ARES	50'/20'	MATCHED / MED
SUBORDINATE TREE	(Symbol)	PIRUS ELBERGA / AFGHAN PINE	15 G./ARES	50'/20'	MATCHED / LOW
SUBORDINATE TREE	(Symbol)	QUERCUS LORNA / VALLEY OAK	15 G./ARES	60'/30'	MATCHED / LOW
SUBORDINATE TREE	(Symbol)	CELRUS DEODORA / DEODAR CEDAR	24 BOX	70'/30'	MATCHED / LOW
SUBORDINATE TREE	(Symbol)	QUERCUS WESCHER / INTERIOR LIVE OAK	15 G./ARES	40'/40'	NATURAL / LOW
ACCENT TREE	(Symbol)	COTYLIUS COCOSRYA 'ROYAL PURPLE' / SHADY TREE	15 G./ARES	15'/15'	MATCHED / LOW
ACCENT TREE	(Symbol)	PODOCARPUS HENKELI / LONG LEAF YELLOW WOOD	15 G./ARES	50'/25'	MATCHED / MED
ACCENT TREE	(Symbol)	POPULUS ALBA PYRAMIDUS / BULLENA POPPY	24 BOX	80'/15'	MATCHED / HIGH
<b>UTILITY EASEMENT TREES</b>					
SHADE TREE	(Symbol)	LAURUS NOBILIS / CRESCENT LAUREL	15 G./ARES	10'/15'	MATCHED / LOW
SHADE TREE	(Symbol)	CHENOPodium LINARIUM / MIMNEY / TIMELESS BEAUTY / DESERT WILLOW	15 G./ARES	15'/15'	MATCHED / LOW
SHADE TREE	(Symbol)	RHAPLODIA S. MAJESTIC BEAUTY / ROMA HAWKWOOD	15 G./ARES	10'/10'	MATCHED / LOW
ACCENT TREE	(Symbol)	CERCIS CANADENSIS 'MERLOT' / EASTERN REDBUD	24 BOX	12'/15'	MATCHED / MED
<b>MOUNDING SHRUBS/VINE</b>					
MOUNDING SHRUB/VINE	(Symbol)	FREMONTODENDRON CALIFORNICUM / FLANNEL BUSH	15 G./ARES	15'/12'	SPREADING / LOW
MOUNDING SHRUB/VINE	(Symbol)	LONICERA JAPONICA 'WILLIAMS' / WALL'S HONEYBUCKLE	15 G./ARES	8'/20'	SPREADING / LOW
MOUNDING SHRUB/VINE	(Symbol)	ROSA BANKSIAE 'LITEX' / YELLOW LADY BANKS ROSE	15 G./ARES	8'/20'	SPREADING / LOW
<b>BUILDING ENVELOPE</b>					
TREES	(Symbol)	PIRUS CALLERIANA 'RESPIRE' / FLOWERING PEAR	24 BOX	35'/25'	MATCHED / MED
TREES	(Symbol)	LACINOSTROMA X. ANAPHALOIDES / CRAPE MYRTLE	24 BOX	20'/15'	MATCHED / LOW
TREES	(Symbol)	PODOCARPUS HENKELI / LONG LEAF YELLOW WOOD	15 G./ARES	50'/25'	MATCHED / MED

NOTE: LANDSCAPE ARCHITECT RESERVES THE RIGHT, UPON CITY APPROVAL, TO SUBSTITUTE PLANT MATERIAL DUE TO INHERENT AVAILABILITY SHORTAGES OR ENVIRONMENTAL RESTRICTIONS.



UPPER STORY TREE LEGEND: STAGE 1 PERMIT

TREE TYPE	SYMBOL	BOTANICAL NAME	SIZE/SPACING	HEIGHT/SPREAD	WATER USE
<b>TREES - UPPER STORY</b>					
<b>STREET FRONTAGES</b>					
WASHINGTON SILVER STREET TREE		ACER RUBRUM 'RED SUNSET' RED MAPLE	24 BOX	40'/20'	MATCHED MED
SUBORDINATE TREE		PRINUS CALIFORNICA 'RED SPICE' FLOWERING PEAR	24 BOX	30'/25'	MATCHED MED
FREEFORM TREE		ZELKOVA S. VILLAGE GREEN SAKURAI ZELKOVA	15 G./VARES	35'/40'	DOUBLE ROW MED
STREET TREE		PODOCARPUS GRACILIS FINE PINE	24 BOX	50'/30'	DOUBLE ROW LOW
<b>PARKING LOTS AND PERIMETERS</b>					
SHADE TREE		ACER RUBRUM 'OCTOBER GLORY' RED MAPLE	15 G./VARES	60'/25'	MATCHED MED
		QUERCUS VIRGINICA SOUTHERN LIVE OAK	15 G./VARES	60'/40'	MATCHED MED
		FRAXINUS CHINENSIS CHINESE PASTICHE	15 G./VARES	40'/40'	MATCHED LOW
		PLATANUS A. BLOODGOOD CROWN PALM TREE	24 BOX	60'/40'	MATCHED MED
		QUERCUS S. BOBUR CRIMSON SPICE OAK	15 G./VARES	50'/20'	MATCHED MED
SUBORDINATE TREE		PRINUS ELDERICA WEDDIN PINE	15 G./VARES	50'/20'	MATCHED LOW
		QUERCUS UMBRATA VALLEY OAK	15 G./VARES	60'/20'	MATCHED LOW
		CELOSIA DEODORA BOSTON CEDAR	24 BOX	70'/25'	MATCHED LOW
		QUERCUS WILSONII INTERIOR LIVE OAK	15 G./VARES	40'/40'	NATURAL LOW
ACCENT TREE		COTINUS COCOONARIA 'ROYAL PURPLE' SHAMBUK TREE	15 G./VARES	15'/15'	MATCHED LOW
		PODOCARPUS HENKELI LONG LEAF YELLOW WOOD	15 G./VARES	50'/25'	MATCHED MED
		POPULUS ALBA PROMINENS BOLLANA POPLAR	24 BOX	60'/15'	MATCHED HIGH
<b>UTILITY EASEMENT TREES</b>					
SHADE TREE		JUNIPUS NOBILIS GREEN LAUREL	15 G./VARES	10'/15'	MATCHED LOW
		CHILOPSIS LINEARIS MONKEY FLAME TREE	15 G./VARES	15'/15'	MATCHED LOW
		TRAPALDIA L. MAJESTIC BEAUTY MOON HARTSHORN	15 G./VARES	10'/10'	MATCHED LOW
ACCENT TREE		CERCIS CANADENSIS 'MERLOT' EASTERN REDBUD	24 BOX	12'/15'	MATCHED MED
MOULDING SHRUB/VINE		FREMYNTODENDRON CALIFORNICUM FRANKIE BUSH	15 G./VARES	15'/12'	SPREADING LOW
		LONICERA JAPONICA 'NALLIAN' HALL'S HONEYBUCKLE	15 G./VARES	8'/20'	SPREADING LOW
		ROSA GANDHESE 'LITKA' YELLOW LAUREL ROSE	15 G./VARES	8'/20'	SPREADING LOW
<b>BUILDING ENVELOPE</b>					
TREES		PRINUS CALIFORNICA 'RED SPICE' FLOWERING PEAR	24 BOX	30'/25'	MATCHED MED
		LACINOSTROMA X. ARAPHO CRAPE MYRTLE	24 BOX	20'/15'	MATCHED LOW
		PODOCARPUS HENKELI LONG LEAF YELLOW WOOD	15 G./VARES	50'/25'	MATCHED MED

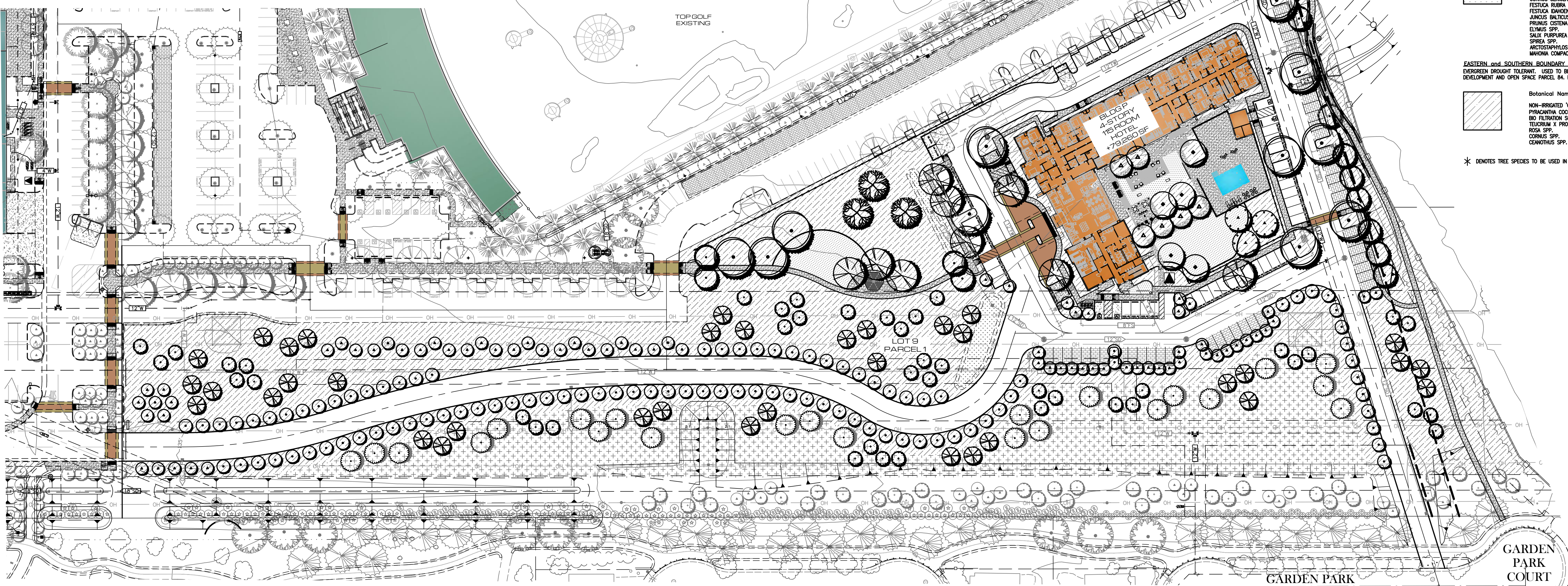
NOTE: LANDSCAPE ARCHITECT RESERVES THE RIGHT, UPON CITY APPROVAL, TO SUBSTITUTE PLANT MATERIAL DUE TO INHERENT AVAILABILITY SHORTAGES OR ENVIRONMENTAL RESTRICTIONS.

PLANT LIST AND LEGEND: STAGE 2 PERMIT

USE TYPE	SYMBOL	BOTANICAL NAME	COMMON NAME	SIZE/SPACING	HEIGHT/SPREAD	WATER USE
<b>TREES-UPPERSTORY</b>						
<b>STREET FRONTAGES</b>						
WASHINGTON BLVD STREET TREE		NOTE: LANDSCAPE ARCHITECT RESERVES THE RIGHT UPON CITY APPROVAL TO SUBSTITUTE PLANT MATERIAL DUE TO INHERENT AVAILABILITY SHORTAGES OR ENVIRONMENTAL RESTRICTIONS.				
		ACER RUBRUM 'RED SUNSET'	RED MAPLE	24 BOX	40'/20'	MATCHED MED
SUBORDINATE TREE		PYRUS CALLERYANA 'REDSPIRE'	FLOWERING PEAR	24 BOX	35'/25'	MATCHED MED
<b>FREEDOMWAY</b>						
STREET TREE		ZELKOWA S. VILLAGE GREEN SAWLEAF	ZELKOWA	15 G./VARIES	35'/40'	DOUBLE ROW MED
THRIVER		PODOCARPUS GRAUOLIOR	TEW PINE	24 BOX	50'/30'	DOUBLE ROW LOW
<b>PARKING LOTS AND PERIMETER</b>						
SHADE TREE		ACER RUBRUM 'OCTOBER GLORY'	RED MAPLE	15 G./VARIES	60'/25'	MATCHED MED
		QUERCUS VIRGINIANA	SOUTHERN LIVE OAK	15 G./VARIES	60'/40'	MATCHED MED
		PISTACHIA CHINENSIS	CHINESE PISTACHE	15 G./VARIES	40'/40'	MATCHED LOW
		PLATANUS A. BLOODGOOD	LONDON PLANE TREE	24 BOX	60'/40'	MATCHED MED
		QUERCUS X ROBUR	CRIMSON SPIRE OAK	15 G./VARIES	50'/20'	MATCHED MED
SUBORDINATE TREE		PINUS ELDERICA	AFGHAN PINE	15 G./VARIES	50'/20'	MATCHED LOW
		QUERCUS LOBATA	VALLEY OAK	15 G./VARIES	60'/30'	MATCHED LOW
		CEDRUS DEODORA	DEODAR CEDAR	24 BOX	70'/35'	MATCHED LOW
		QUERCUS WISLIZENI	INTERIOR LIVE OAK	15 G./VARIES	40'/40'	NATURAL LOW

USE TYPE	SYMBOL	BOTANICAL NAME	COMMON NAME	SIZE/SPACING	HEIGHT/SPREAD	WATER USE
<b>PARKING LOTS AND PERIMETER</b>						
ACCENT TREE		COTINUS COGORYAWA	ROYAL PURPLE 15 G./VARIES	15'/15'	MATCHED	LOW
		PODOCARPUS HENKELI	LONG LEAF YELLOW WOOD	15 G./VARIES	50'/25'	MATCHED MED
		POPULUS ALBA PYRAMIDALIS	BOLLEANA POPLAR	24 BOX	80'/15'	MATCHED HIGH
<b>UTILITY EASEMENT TREES</b>						
SHADE TREE		LAURUS NOBILIS	GRECOAN LAUREL	15 G./VARIES	10'/15'	MATCHED LOW
		CHALCOPHYS LINEARIS	MONHEW TIMELESS BEAUTY DESERT WILLOW	15 G./VARIES	15'/15'	MATCHED LOW
ACCENT TREE		RHAPLOLEPS L. MAJESTIC BEAUTY	INDIAN HAWTHORN	15 G./VARIES	10'/10'	MATCHED LOW
		CERCIS CANADENSIS 'MERLOT'	EASTERN REDBUD	24 BOX	12'/15'	MATCHED MED
MOUNDING SHRUB/VINE		FREMONTODENDRON CALIFORNICUM	FLAMEL BUSH	15 G./VARIES	15'/12'	SPREADING LOW
		LONICERA JAPONICA 'HALLIANA'	HALL'S HONEYSUCKLE	15 G./VARIES	8'/20'	SPREADING LOW
		ROSA BANKSIAE 'LITEA'	YELLOW LADY BANKS' ROSE	15 G./VARIES	8'/20'	SPREADING LOW
<b>BUILDING ENVELOPE</b>						
TREES		PYRUS CALLERYANA 'REDSPIRE'	FLOWERING PEAR	24 BOX	35'/25'	MATCHED MED
		LAGERSTROEMIA X. ARAPAHO	CRAPE MYRTLE	24 BOX	20'/15'	MATCHED LOW

SHRUB AND GROUNDCOVERS				
SHRUBS, GROUNDCOVER, VINES, PERENNIALS, GRASSES-UNDERSTORY				
BACKGROUND OR FOUNDATION SHRUB MATERIAL				
EVERGREEN, LARGE SHRUBS TO 8'-0" USED FOR REDUCING BUILDING MASS OR SCREENING UNDESIRABLE VIEWS.				
Botanical Name	Size (Min.)	Spacing (Min.)	Water Use	
ARCHISTOPHYLOS H. MCMURRI	1 1/2 GAL	36" c.	LOW	
ARBUUS U. COMPACTA	1 1/2 GAL	36" c.	LOW	
GREVILLEA CANBERRA	1 1/2 GAL	36" c.	LOW	
HELIUM GLENDENI 'MRS. ROEDING'	1 1/2 GAL	36" c.	LOW	
FRANKLINIA CALIFORNICA	1 1/2 GAL	36" c.	LOW	
RHAMNUS JACK EVANS	5 GAL	60" c.	MOD LOW	
XYLOPIA C. 'COMPACTA'	5 GAL	36" c.	LOW	
FACER SHRUB MATERIAL				
EVERGREEN OR DECIDUOUS SHRUBS TO 4'-0" USED FOR 'TERRACING' OF PLANT MATERIAL. SEASONAL COLOR AND SOFTENING OF BUILDING EDGES AND FOUNDATION SHRUBS.				
Botanical Name	Size (Min.)	Spacing (Min.)	Water Use	
CEANOTHUS SPP.	1 1/2 GAL	36" c.	LOW	
RHAMNUS 'SM BRUNO'	5 GAL	48" c.	LOW	
COSTUS SP.	1 1/2 GAL	36" c.	LOW	
CALLISTEMON LITTLE JOHN	1 1/2 GAL	36" c.	LOW	
RHAMNUS SPP.	1 1/2 GAL	36" c.	MOD	
ROSMARINUS O. TUSCAN BLUE	1 GAL	48" c.	LOW	
ACCENT SHRUB MATERIAL				
EVERGREEN OR PERENNIAL SHRUBS TO 3'-0", SOMETIMES LARGER. USED FOR AESTHETIC VALUE IN LANDSCAPE THROUGH BLOOM, LEAF COLOR, OR OVERALL CHARACTER.				
Botanical Name	Size (Min.)	Spacing (Min.)	Water Use	
HESPERALOE SPP.	1 GAL	18" c.	MED	
DIETES SP.	1 GAL	36" c.	LOW	
HEMEROCALLIS HYBRIDS	1 GAL	24" c.	MED	
LAWNODIA SP.	1 GAL	24" c.	LOW	
MANISIA A. 'COMPACTA'	1 1/2 GAL	36" c.	LOW	
CALLISTEMON LITTLE JOHN	1 GAL	36" c.	MED	
MANISIA 'HARSHOUR DWARF'	1 GAL	24" c.	LOW	
FENESTRUM SP.	1 GAL	24" c.	LOW	
GROUND COVER MATERIAL				
EVERGREEN OR PERENNIAL SHRUBS TO 30" HIGH. USED TO BLANKET LARGER AREAS AND AS A FILLER BETWEEN SITE WORK EDGES AND FACER SHRUBS.				
Botanical Name	Size (Min.)	Spacing (Min.)	Water Use	
ARCTOSTAPHYLOS SP.	1 GAL	36" c.	LOW	
BACCHARIS PILLULARIS	1 GAL	24" c.	LOW	
COPROSMIA X. NIKKA	1 GAL	36" c.	MED	
MANISIA H. DWARF	1 GAL	36" c.	LOW	
ROSMARINUS O. 'PROSTRATUS'	1 GAL	36" c.	LOW	
ROSA 'FLOWER GARNET' SP.	1 GAL	24" c.	MED	
TRACHELOSPERMUM JASMINOIDES	1 GAL	36" c.	MED	
LONICERA INTERRUPTA	1 GAL	24" c.	MED	
ROSA SPP.	1 GAL	24" c.	LOW	
TURF SOODED - 'TOLERIO' TURF TYPE	---	---	HIGH	
DWARF FESCUE	---	---	MED	
TURF SOODED - 'NO MOW' FESCUE	---	---	---	
NON-IRRIGATED HYDROSEED - PC SEED	---	---	---	
GREEN TO GOLD BLEND W/WILDFLOWERS	---	---	---	
WATER QUALITY AREAS				
EVERGREEN OR PERENNIAL SHRUBS TO 30" HIGH. USED TO BLANKET LARGER AREAS AND AS A FILLER BETWEEN SITE WORK EDGES AND FACER SHRUBS.				
Botanical Name	Size (Min.)	Spacing (Min.)	Water Use	
CORNUS SERICEA	1 GAL	4" c.	MOD	
FESTUCA RUBRA	1 GAL	18" c.	LOW	
FESTUCA IDAHOENSIS	1 GAL	18" c.	LOW	
JUNCUS BALTICUS	1 GAL	18" c.	LOW	
PRUNUS COSTEM	1 GAL	18" c.	LOW	
ELYMUS SPP.	1 GAL	18" c.	MOD	
SALIX PURPUREA	1 GAL	3" c.	LOW	
SPIREA SPP.	1 GAL	3" c.	LOW	
ARCTOSTAPHYLOS LM URIS	1 GAL	36" c.	LOW	
MANISIA COMPACTA	1 GAL	3" c.	LOW	
EASTERN and SOUTHERN BOUNDARY EDGE PLANTING-(EXISTING)				
EVERGREEN DROUGHT TOLERANT. USED TO BLANKET LARGER AREAS AND AS A TRANSITION BUFFER BETWEEN DEVELOPMENT AND OPEN SPACE PARCEL B4. BUFFER TO OPEN SPACE PARCEL USING COMPATIBLE MATERIAL.				
Botanical Name	Size (Min.)	Spacing (Min.)	Water Use	
NON-IRRIGATED 'GREEN/GOLD BLEND'	SEED	NA	V. LOW	
PHYRACATHA COCCINEA 'LIMBY'	1 GAL	36" c.	LOW	
BIO FILTRATION SOD	SOD	SOD	MOD	
TELEKIMIA X. PROSTRATA	1 GAL	24" c.	LOW	
ROSA SPP.	1 GAL	36" c.	LOW	
CORNUS SPP.	1 GAL	24" c.	LOW	
CEANOTHUS SPP.	1 GAL	36" c.	MOD	



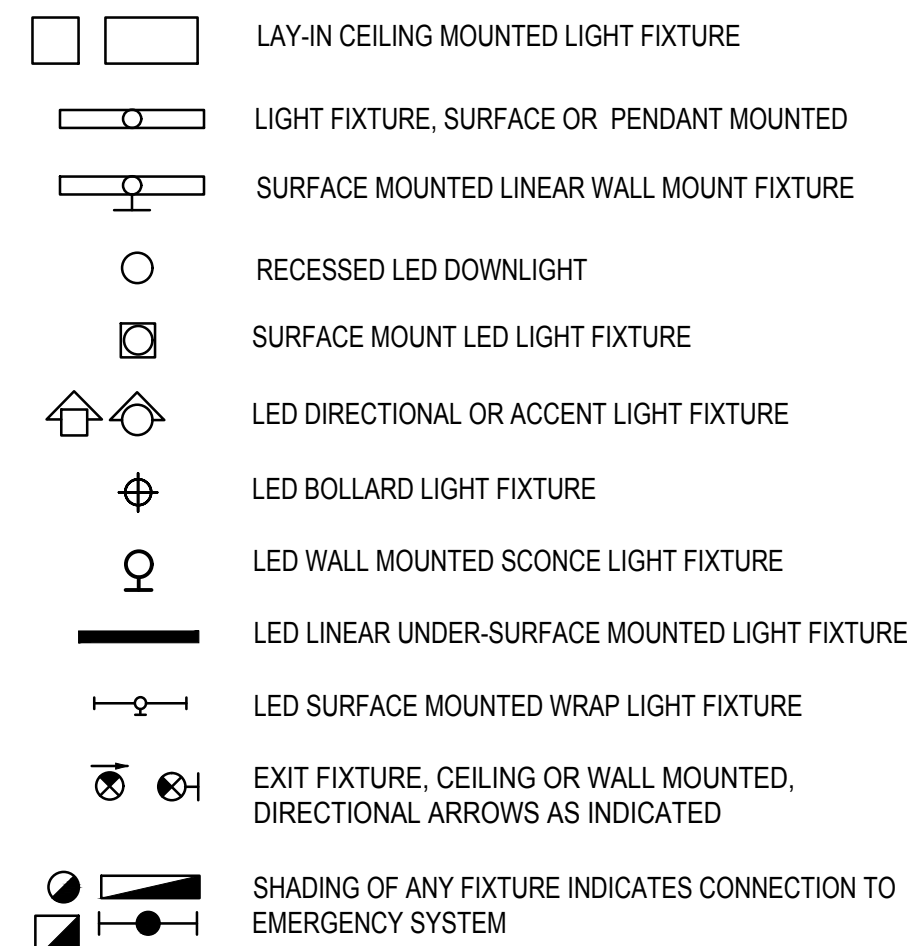


## SYMBOLS LIST

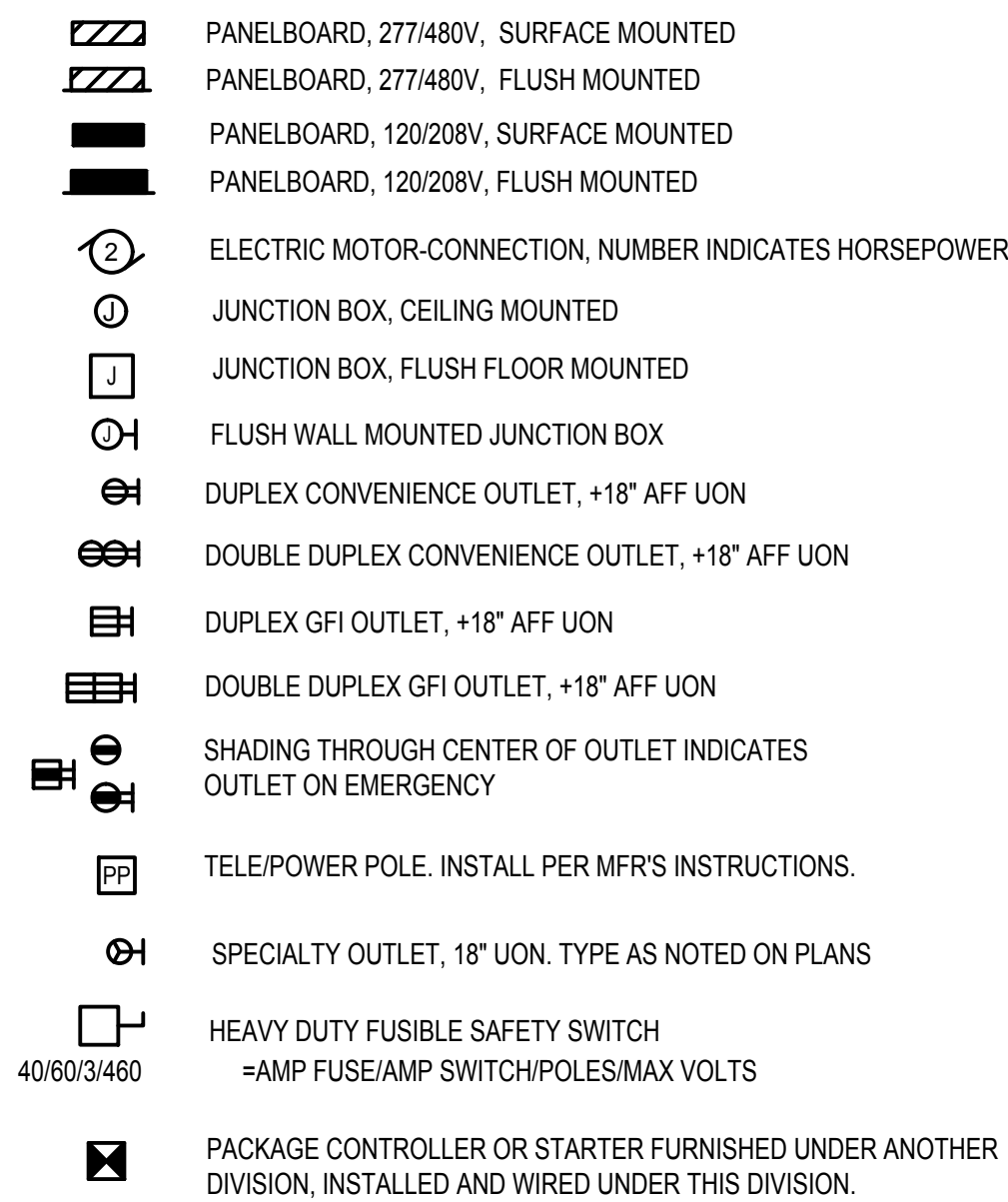
## DRAWING INDEX

## GENERAL NOTES

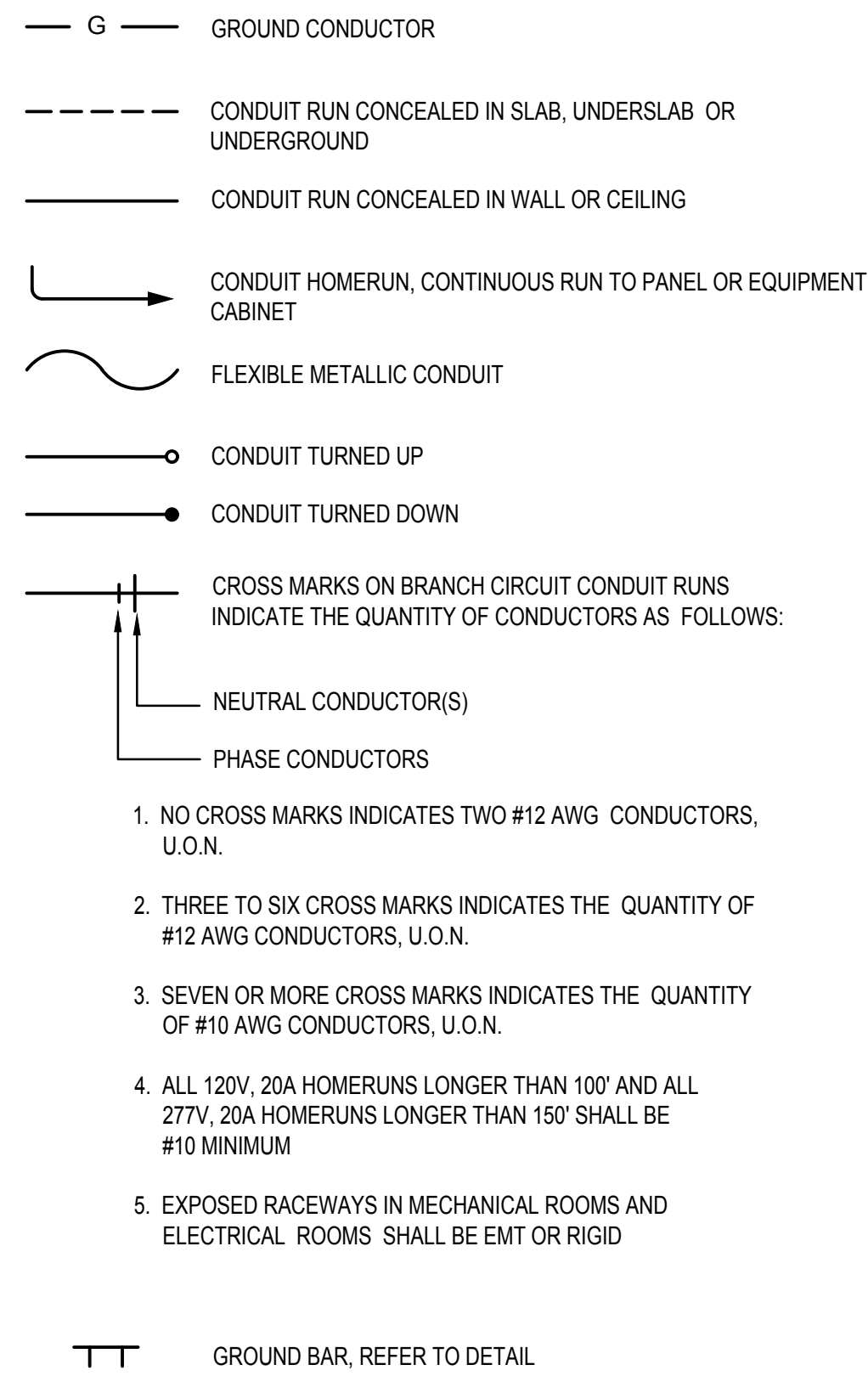
### LIGHTING



### POWER



### RACEWAYS



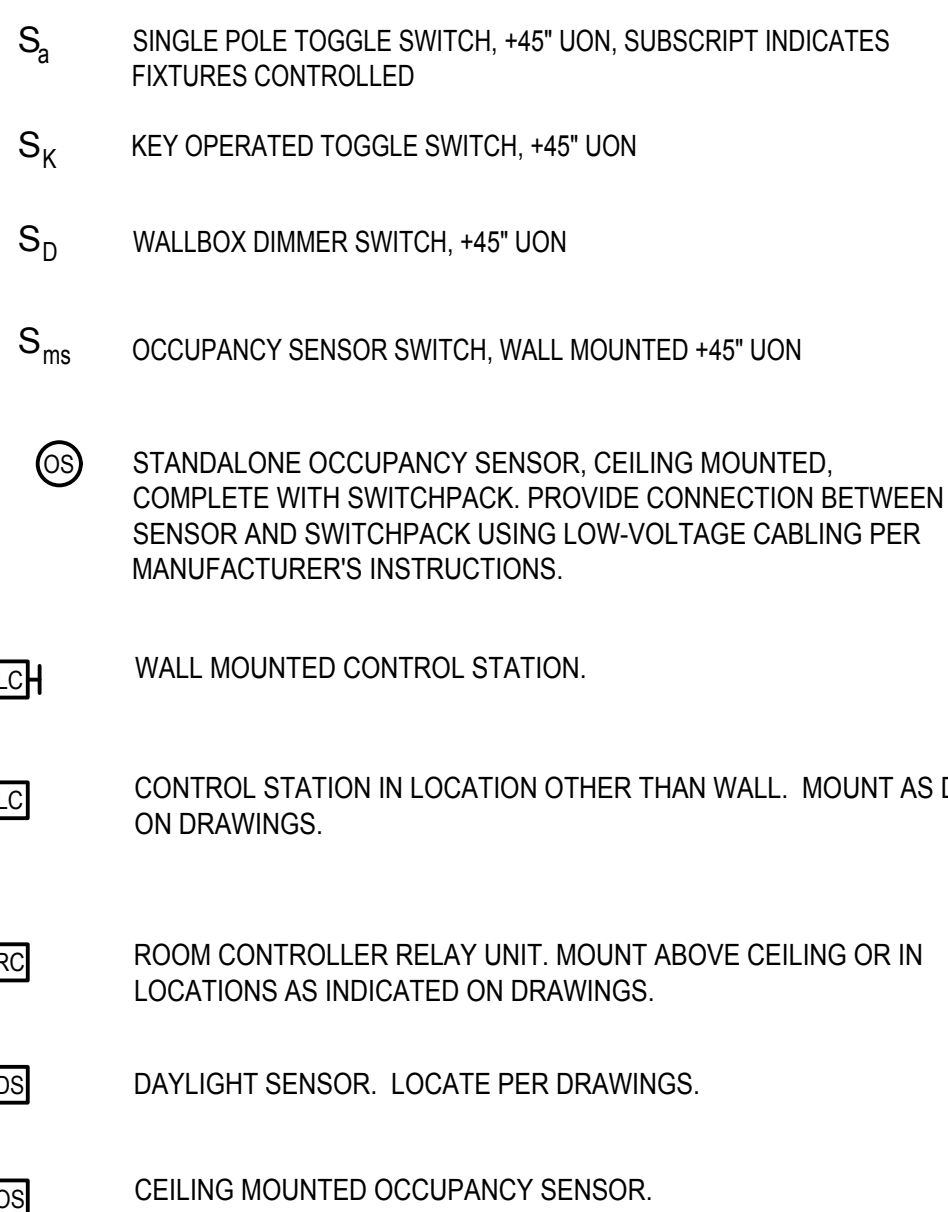
- E0.01 SYMBOLS LIST, GENERAL NOTES, ABBREVIATIONS & DRAWING INDEX
- E0.02 FIXTURE SCHEDULE
- E1.01 PRELIMINARY SITE LIGHTING PLAN
- E1.02 PHOTOMETRIC PLAN

1. MAINTAIN FIRE RATING OF ALL FLOORS, CEILINGS AND WALLS PENETRATED BY ELECTRICAL WORK.
2. ELECTRICAL DEVICE OPENINGS IN FIRE RATED WALLS SHALL NOT EXCEED 16 SQUARE INCHES, AND SHALL NOT EXCEED 100 SQUARE INCHES PER 100 SQUARE FEET OF WALL AREA. DEVICE OPENINGS ON OPPOSITE SIDES OF FIRE RATED WALLS SHALL BE HORIZONTALLY SEPARATED BY A MINIMUM OF 24 INCHES.
3. ALL ELECTRICAL EQUIPMENT SHALL BE BRACED OR ANCHORED TO RESIST A HORIZONTAL FORCE ACTING IN ANY DIRECTION PER THE 2013 CALIFORNIA BUILDING CODE.
4. VERIFY CIRCUIT VOLTAGE OF SUPPLY CIRCUIT SHOWN ON PLANS FOR ALL LIGHT FIXTURES. PROVIDE FIXTURES/DRIVERS SUITABLE FOR SUPPLY CIRCUIT VOLTAGE.
5. UNLESS OTHERWISE NOTED, CONDUIT ROUTING, IF SHOWN, IS ESSENTIALLY DIAGRAMMATIC. CONTRACTOR SHALL LAYOUT RUNS TO SUIT FIELD CONDITIONS AND THE COORDINATION REQUIREMENTS OF UTILITIES AND OTHER TRADES.
6. INSTALL AND CONNECT A CODE SIZED INSULATED COPPER EQUIPMENT GROUNDING CONDUCTOR IN ALL BRANCH CIRCUIT AND FEEDER CONDUITS. THESE EQUIPMENT GROUND WIRES ARE NOT SHOWN ON THE PLANS, INCREASE CONDUIT SIZE WHERE REQUIRED.
7. INSTALL A POLYETHYLENE PULLING ROPE IN ALL EMPTY CONDUITS.
8. MOUNTING HEIGHTS SHOWN ARE FROM FINISHED FLOOR TO THE CENTERLINE OF THE DEVICE, U.O.N. ALL MOUNTING HEIGHTS SHALL BE AS SHOWN ON THE SYMBOLS LIST UNLESS OTHERWISE NOTED ON THE PLANS OR IN THE SPECIFICATIONS.
9. ALL CONDUIT AND RACEWAY PENETRATIONS THROUGH FIRE RATED WALLS AND FLOORS SHALL BE MADE IN ACCORDANCE WITH 2013 CALIFORNIA BUILDING CODE, CHAPTER 7.
10. ALL CIRCUITS SHALL HAVE A DEDICATED NEUTRAL CONDUCTOR. OTHERWISE, FOR MULTI-WIRE BRANCH CIRCUITS USE MULTI-POLE (HANDLE-TIE) CIRCUIT BREAKERS.
11. SUBSCRIPTS ON SWITCH SYMBOLS (S<sub>a</sub>) DENOTE THE FIXTURE CONTROLLED.
12. VERIFY THE EXACT LOCATION OF ALL EQUIPMENT FURNISHED BY OTHERS PRIOR TO DETERMINING CONDUIT TERMINATION POINTS.
13. VERIFY CEILING TYPE FOR ALL FIXTURES. PROVIDE MOUNTING/TRIM HARDWARE SUITABLE FOR CEILING CONTAINING EACH FIXTURE.
14. ALL WIRING DEVICES SHALL BE PERMANENTLY LABELED WITH PANEL AND CIRCUIT NUMBER SUPPLYING THEM.
15. ALL EQUIPMENT TO BE INSTALLED OR PERMANENTLY CONNECTED (HARDWIRED) SHALL BE LISTED, LABELED OR CERTIFIED BY A NATIONALLY RECOGNIZED TESTING LABORATORY (NRTL).
16. ALL RECEPTACLES, SWITCHES, AND JUNCTION BOXES SHALL BE COLOR CODED AND IDENTIFIED PER THE DIVISION 26 SPECIFICATIONS. ALL EMERGENCY SYSTEM DEVICES AND COVERPLATES SHALL BE RED IN COLOR.

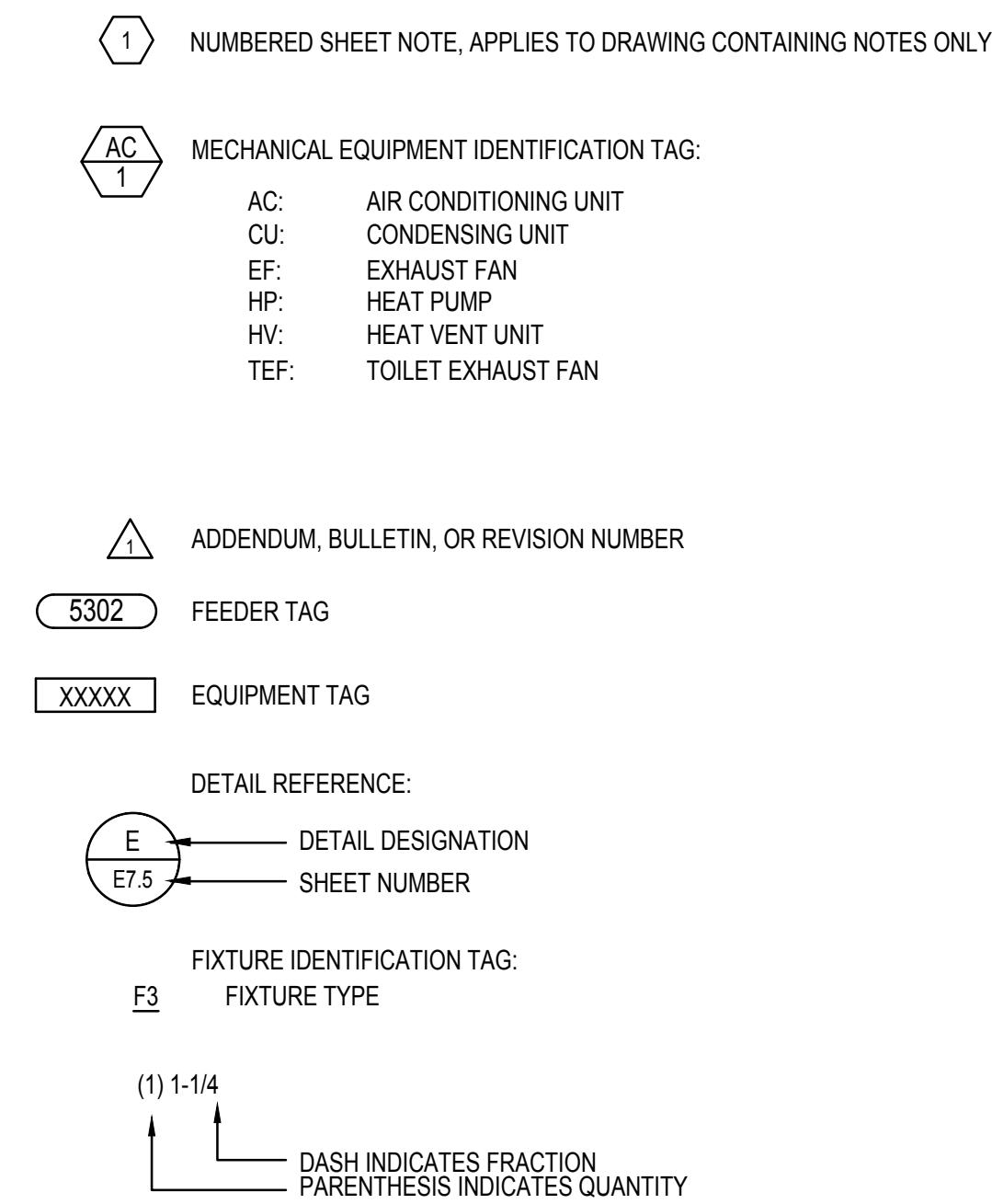
## ABBREVIATIONS

<p>AC ALTERNATING CURRENT</p> <p>A/C AIR CONDITIONER</p> <p>AFF ABOVE FINISHED FLOOR</p> <p>ALT ALTERNATE</p> <p>AA/FA AMBIENT AIR/FORCED AIR</p> <p>AUX AUXILIARY</p> <p>A OR AMP AMPERE</p> <p>A.T.S AUTOMATIC TRANSFER SWITCH</p> <p>BD BOARD</p> <p>CB CIRCUIT BREAKER</p> <p>C CONDUIT</p> <p>CAB CABINET</p> <p>CLG CEILING</p> <p>CCT CIRCUIT</p> <p>COAX COAXIAL</p> <p>CONT CONTINUOUS</p> <p>CONTR CONTRACTOR</p> <p>CORR, CORRIDOR</p> <p>CRT CATHODE RAY TUBE</p> <p>CT CURRENT TRANSFORMER</p> <p>DGP DATA GATHERING PANEL</p> <p>DIA DIAMETER</p> <p>DIAG DIAGRAM</p> <p>DC DIRECT CURRENT</p> <p>DISC DISCONNECT</p> <p>DIST DISTRIBUTION</p> <p>DN DOWN</p> <p>DPST DOUBLE POLE SINGLE THROW</p> <p>DSD DUCT SMOKE DETECTOR</p> <p>EC EMPTY CONDUIT</p> <p>ELEC ELECTRICAL</p> <p>EMT ELECTRICAL METALLIC TUBING</p> <p>EP EMERGENCY POWER</p> <p>EPO EMERGENCY POWER OFF</p> <p>EUGP EXISTING UNDERGROUND PRIMARY</p> <p>EUGS EXISTING UNDERGROUND SECONDARY</p> <p>EWC ELECTRIC WATER COOLER</p> <p>EXP EXPLOSION PROOF</p> <p>FIXT FIXTURE</p> <p>FLEX FLEXIBLE</p> <p>FLR FLOOR</p> <p>FVNR FULL VOLTAGE, NON REVERSING</p> <p>GFI GROUND FAULT INTERRUPTER</p> <p>GFP GROUND FAULT PROTECTION</p> <p>GRC GALVANIZED RIGID CONDUIT</p> <p>GRD GROUND</p> <p>GFCT GROUND FAULT CURRENT TRANSFORMER</p> <p>HG HOSPITAL GRADE</p> <p>HGT HEIGHT</p> <p>HP HORSEPOWER</p> <p>HTR HEATER</p> <p>HZ HERTZ</p> <p>IMC INTERMEDIATE METAL CONDUIT</p> <p>ISO ISOLATED</p> <p>JB OR J-BOX JUNCTION BOX</p> <p>KVA KILOVOLT AMPERE</p> <p>KW KILOWATT</p> <p>KWH KILOWATT HOUR</p> <p>KALC KILO-AMPERES INTERRUPTING CURRENT</p> <p>LT LIGHT</p> <p>LTFIX LIGHT FIXTURE</p> <p>LV LOW VOLTAGE</p> <p>LCP LIGHTING CONTROL PANEL</p> <p>MFR MANUFACTURER</p> <p>MAX MAXIMUM</p> <p>MIN MINIMUM</p> <p>MCC MOTOR CONTROL CENTER</p> <p>MT MOUNT</p> <p>MTD MOUNTED</p> <p>MTG MOUNTING</p> <p>MLO MAIN LUGS ONLY</p> <p>MCB MAIN CIRCUIT BREAKER</p>	<p>NL NIGHT LIGHT</p> <p>NTS NOT TO SCALE</p> <p>N/A or NA NOT APPLICABLE</p> <p>NO NUMBER</p> <p>NIC NOT IN CONTRACT</p> <p>NF NONFUSIBLE</p> <p>NPA NATIONAL PURCHASING AGREEMENT</p> <p>OC ON CENTER</p> <p>PH PHASE</p> <p>PNL PANEL</p> <p>PB PULL BOX</p> <p>PVC POLYVINYL CHLORIDE</p> <p>P POLE</p> <p>PT POTENTIAL TRANSFORMER</p> <p>RECEPT RECEPTACLE</p> <p>REQ.D. REQUIRED</p> <p>RM ROOM</p> <p>S SAFETY</p> <p>S/N SOLID NEUTRAL</p> <p>SES SERVICE ENTRANCE SECTION</p> <p>SHT SHEET</p> <p>STD STANDARD</p> <p>SWT SWITCH</p> <p>SWBD SWITCHBOARD</p> <p>TELE TELEPHONE</p> <p>TTB TELEPHONE TERMINAL BOARD</p> <p>TV TELEVISION</p> <p>TS TIME SWITCH</p> <p>TP TAMPER PROOF</p> <p>T TRANSFORMER</p> <p>TYP TYPICAL</p> <p>TC TIMECLOCK</p> <p>UF UNDERFLOOR</p> <p>UG UNDERGROUND</p> <p>UGE UNDERGROUND ELECTRIC</p> <p>UGP UNDERGROUND PRIMARY</p> <p>UGS UNDERGROUND SECONDARY</p> <p>UON UNLESS OTHERWISE NOTED</p> <p>V VOLT</p> <p>VA VOLTAMPERE</p> <p>VFD VARIABLE FREQUENCY DRIVE</p> <p>WW WIREWAY</p> <p>W WATT OR WIRE</p> <p>WP WEATHERPROOF</p> <p>XFMR TRANSFORMER</p>
--	---

### LIGHTING CONTROL



### CONVENTIONS



K:\05\RY15-2022-038 Roseville HomeWood Suites Hotel1-Drawing\CD\Working Folder\RH-SH-E01.dwg, 1/11/2023 1:10:01 PM, Iginado